

The Silver Showcase

Volume 1002 No.4

Email:silvercenter@sbcglobal.net • Website:www.silvercenterseguin.com

April 2025

Board of Directors

President

Rosie Van Booven

Vice President:

Barbara Behal

Treasurer:

Gay Lynn Olsovsky

Secretary:

Syndee Bundick

Board Members

Gary Kubenka

Norman Partain

Bingo Chair

Gay Lynn Olsovsky

SILVER CENTER STAFF

Executive Director

Glenda Partain

Book Keeper

Pat Weber

Cook

LuAnn Archibeque

Catering Supervisor

Brenda Aguilar

Catering Staff

Wanda Rosales

Shelly Lindsey

Kelly Perkins-Orozco

Janitor

Phone: (830) 303-6612

Fax: (830) 379-3813

Letter From the President:

Hello Everyone!!

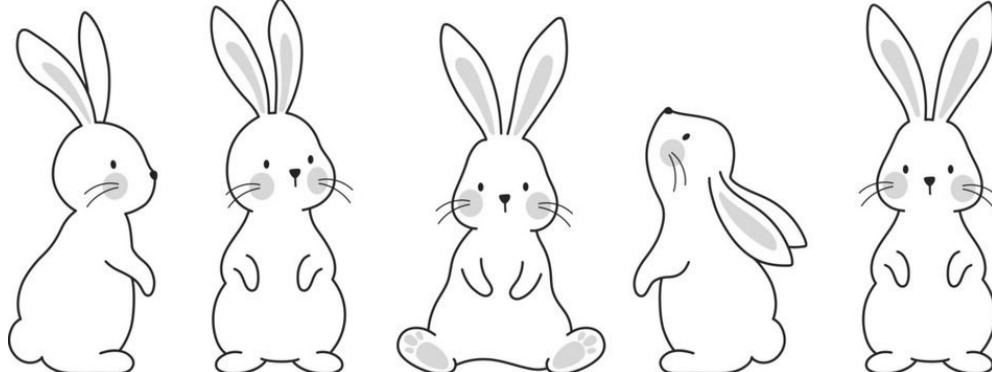
I hope this newsletter finds you all doing okay, or at least the best that you can be. You may not realize that we put this publication together well in advance, so that it can be printed and prepared for mailing, to get to you around the first of the month. So I'm hoping that by the time you read this, we have been blessed with some rain! Our poor earth is so parched and we need it so badly! As I am writing this, the forecast shows the possibility, I certainly hope we actually receive it!!

Springtime is my favorite time of the year! I love seeing all the plants waking up from the winter. I always watch for the trees putting out new leaves. Some take longer than others and I'm always worried that they didn't survive! And, of course, around here we get to enjoy the beautiful bluebonnets and other wild flowers. We are so lucky to have a colorful display, especially if they get some moisture!

Our Silver Center continues to remain busy with such a variety of events. I am so thankful that our community sees us as a great venue! Our staff and volunteers work so hard to provide a safe and beautiful place for everyone to use and enjoy! Please call if we can help you with a special event. And don't forget our lunches, served Tuesday through Friday. Just call early or the day before, to find out what will be served and to place your order! You will not be disappointed!!

As I always say, thank you all so much for supporting the Silver Center!! We hope to see you soon and happy Spring!!

Rosie Van Booven



HELLO FROM THE FRONT DESK....

As most of you know, my theme is usually make a memory. Well, in March, my father took his memories with him to Heaven. He had a wonderful life and some of our dancers knew him because he would come sit at my table back when he was able to drive. Instead of what's going on at my desk this month... this month's message is memories of my dad.

William Hugo Haese (known by most people as Billy Haese) was born on March 11th, 1930 and peacefully passed away in his sleep 95 years and a few hours later on the morning of March 12th 2025.

Billy was born in his parent's home in San Antonio TX to Isabell & Hugo Haese. As a child, his family moved to McCoy, TX during the Great Depression to work on his grandpa's dairy.

As a youngster Billy rode his horse to Casper School. He told many stories about that darned horse slipping his harness off and trotting back home leaving Billy at school with a swish of its tail, to walk several miles from school back home on foot. As a teenager he proudly bought himself a model T and customized it to his liking to have a more reliable ride to and from school. In the 30s and 40s times were tough and money was tight but he and his friends always made time for swimming and fishing in his grandpa's stock pond and a nearby creek and he learned to shoot straight and hunt, bringing home food for the family and pelts to sell to help the family with expenses. Billy and his buddy's were known for playing pranks while attending school in Poth. One prank he was always ready to share revolved around Billy and his buddies stealing an out house and placing it on top of the school's roof. They were caught, of course, and they had to take the out house down and return to where it came from... and build it back better than it was originally! His most exciting and proud moments revolved around the time that he spent in the US Air-force. From Basic training in SA to time spent serving in Alabama before he was sent to Korea, Billy proudly rode his shiny black & chrome motorcycle back and forth from the base to McCoy and he eventually became sergeant of the motor pool where he proudly served his country. Coming home after Korea, Billy caught the eye of Bettie Gene Holstein, of Floresville, who became his bride of 55 years. Bettie died in 2010. They had 2 daughters together. Glenda Haese Partain and Christine Haese Schofield.

All of his time while in McCoy laid the foundation for his life's work in the dairy industry. He retired from AMPI (Associated Milk Producers Inc) in the 70s after proudly working Quality Control with dairies throughout mid and southern Texas.

The family will have a private graveside service at a later date and in lieu of flowers, the family requests donations be made in his honor to the senior citizens center known as The Silver Center

510 E Court St

Seguin, TX 78155 or to Pleasant Valley Cemetery Assn

5721 FM 3335

Stockdale TX 78160. Some of Billy's best moments were spent at the Silver Center with family by his side or on his riding mower cutting the grass at that cemetery.

Billy Haese will be remembered as a strong willed man with a firm

handshake, a quick smile, sparkling hazel eyes, and as a steady shot. A man who loved driving fast, polishing his many cars, trucks, tractors, and mowers over the years... and being with his family. He was a private, Christian man... with a potty mouth and quick temper, but he was a good and honorable man down deep. Billy Haese will be missed but if he was here today, he would quickly tell you to go out and enjoy your life and never look back! He was always quick to tell his family "I love you". He would tell you, his friends and acquaintances, to go out and make a memory today! In the end, it's all about your life's story, not whatever you happen to leave behind. It's truly all about the love you shared while here on this great earth.

Fly high, Billy! You have earned your wings today...



Glenda Partain

BUSINESS MEMBERS

The Silver Center is sincerely grateful for the support of our faithful Business Members.

DIAMOND MEMBERS

Guadalupe Regional Medical Center
Seguin Noon Lions
Gifted Heart Hospice

PLATINUM MEMBERS

Tri-County A/C
CMC Commercial Metal Company

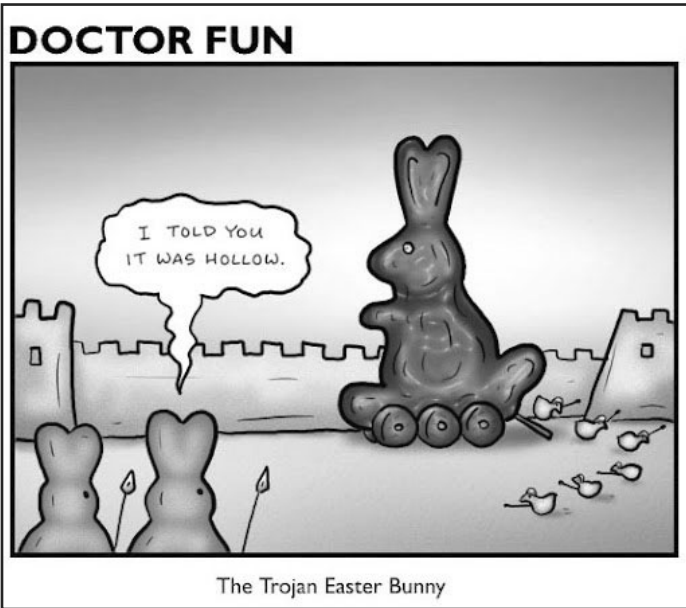
GOLD MEMBERS

First United Bank
2-G Consulting LLC
Kimberly A Illhardt CPA LLC
Advanced Home Health Services
Excelin Health, LLC * Concentration

STANDARD MEMBERS

GVEC
Partners LLC
Sunrise Lions Club
Tres Hewell Mortuary
NOVA Access Flooring
Heart to Heart Hospice
Gary Kubenka Painting
Seguin Gazette-Enterprise
Emanuel's Lutheran Church
Guadalupe Humane Society
Westerhom-Koehler Insurance
Nesbit Living & Recovery Center
Guadalupe County Republican Women
Guadalupe County Conservative Republicans
Seguin-Guadalupe County Heritage Museum
Charles White DPM, FACFAS, - TX Foot & Ankle Surgical Assoc.

Party & Event Rental Supply
 EST. 2022
CROWN
 -EVENT RENTAL-
 www.crowneventrental.com
830-832-7881
 Jason@crowneventrental.com



Easter Word Scramble

- UFISBRETLTE _ _ _ _ _
- HCRUHC _ _ _ _ _
- AIPITGN GEGS _ _ _ _ _
- FFODILDAS _ _ _ _ _
- FORCCIIXNU _ _ _ _ _
- OETHOCCLA GEG _ _ _ _ _
- ARESET KABTSE _ _ _ _ _
- FEASRIIC _ _ _ _ _
- LIPSUT _ _ _ _ _
- GINPRS _ _ _ _ _

Please call Glenda Partain at (830) 303-6612 today to volunteer a couple of hours of your time around the Center.

VOLUNTEER - HOURS - MARCH
 410 Hrs

THANK YOU to all of our VOLUNTEERS that helped us serve our community and those who are helping us deliver meals!

May God Bless all of our Board of Directors who volunteer so much of their time to assist us with special events, dances, and more!

CHARITABLE DONATIONS FOR MARCH
The Precord Family

Smile a While
By Velma Buie

A doctor examined this Lady and then took her husband aside. Doc said, "Sir I don't like the looks of your wife at all." "Me neither doc," said the husband, "but she is a great cook and good with the kids."

A 95 yr old man went to his Dr. for a check-up. Told the doc he was getting married in a week or so. Doc replied, "Mr. Jones, at your age that could be fatal." Mr. Jones replied, "Oh well, if she dies, she dies."

"Mr. Clark, I have reviewed this case very carefully," said the divorce lawyer, "and I've decided to give your wife \$500 a week." "That's very fair your honor," said the husband. "Then I'll try to send her a few bucks myself."

Retirement to do list: Wake up. Nailed it.

I thought growing old would take longer.

One minute you are young and fun. The next, you are turning down the car stereo to see better.

My heart says, "Chocolate and wine" – but my jeans say, "Please, please, please, eat a salad!"

I don't trip, I do random gravity checks.

Sometimes it takes me all day to get nothing done.

I don't have grey hair, I have wisdom highlights.

I see people my age Mountain climbing. I feel good getting my leg through my underwear without losing my balance!

You know it's a bad day when Your wife says good morning Bill and your name is George.



Birthdays of the Month

If you have a November birthday, and are not on our list, please call us so we can update our records! Please note we currently make **to-go** lunches, with **preorder** on Tuesday or Thursday!

APRIL BIRTHDAYS

| | |
|------------------------------|-------------|
| Pat Weber | 4/8 |
| Karen McMath | 4/13 |
| Thalia Stautzenberger | 4/19 |
| Ron Colunga | 4/20 |
| Sherry Hewitt | 4/23 |
| Mary Blawin | 4/24 |
| Robert Calvert | 4/27 |
| Evangeline Clor | 4/27 |
| Rebecca Meckel | 4/29 |



We ♥ Our



LuAnn Archibeque

Martha Greenlaw

Gay Lynn Olsovsky

Barbara Behal

Shirla Humiston

Norman Partain

Syndee Bundick

Bob Kellner

Kelly Perkins-Orozco

Velma Buie

Gary Kubenka

Santa Smith

“Buster” Cage

Pierce Law

Kay Stuart

Mary Jane Cage

Glenda Partain

Rosie Van Booven

Jamie Evans

Sharee Layton

Pat Weber

Brenda Englemann

Karen McMath

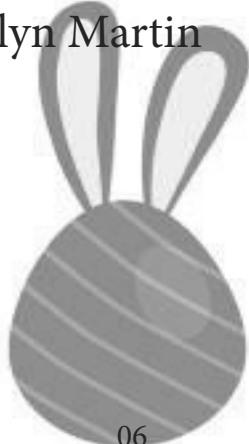
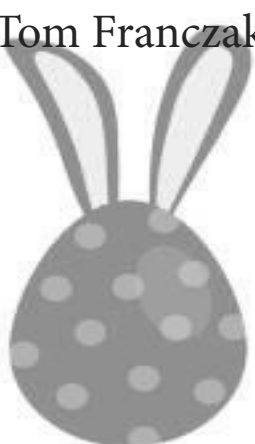
Liz Witten

Dena Flanagan

Betsy Martin

Tom Franczak

Evelyn Martin



Catering by The Silver Center



PODIATRIST SEEING PATIENTS in *Seguin*



Charles White
DPM, FACEAS

Specializing in Care of the Foot & Ankle

- Diabetic Foot Care
- Foot and Ankle Pain
- Primary Podiatry
- Nail/Skin Care
- Wound Care
- Dual Board Certified
- Sports Medicine

Call now for an appointment!
830-491-9211



TEXAS FOOT & ANKLE
SURGICAL ASSOCIATES, PLLC

- Prompt appointments available
- Also seeing patients in Koenig, LaVaca and Nimitz
- Most insurances accepted

932 South State Hwy. 123 Bypass • Seguin, TX 78155
www.southtxpodiatry.com



THE SILVER CENTER / CRYSTAL CHANDALIER BALLROOM

Fridays music starts @ 7:30PM. Doors open at 6:30PM. Call 830-383-6612 for \$10 pre-sale tickets. Tickets \$15 @ the door.

2025 Dance schedule



January

11 Bimbo

24 Gabe Galvan Band

February

14 Wrangler Country

28 Gabe Galvan Band

March

14 The Merles

28 Gabe Galvan Band

April

11 *No Dance*

25 Gabe Galvan Band

May

16 Wrangler Country

30 Gabe Galvan Band

June

13 Bimbo

27 Gabe Galvan Band

July

11 Byron Zipp

25 Gabe Galvan Band

August

8 Wrangler Country

22 Gabe Galvan Band

September

12 Bimbo

26 Gabe Galvan Band

October

10 The Merles

24 Gabe Galvan Band

November

14 Wrangler Country

28 *No Dance due to Holiday*

December

12 Byron Zipp

26 *No Dance due to Holiday*



*Our care makes the difference.
Our heart makes it home*

- * Skilled Nursing Care
- * Physical, Occupational & Speech Therapies
- * Rehabilitation available up to 6 days a week
- * Stroke Rehabilitation
- * Complex wound care
- * Tracheostomy care
- * E-stim, Vital-stim & Ultrasound
- * Wii-abilitation
- * Delicious meals

**THE HEIGHTS
OF GONZALES**

701 North Sarah DeWitt
Gonzales, Texas 78629
Phone: 830-672-4530
Fax: 830-672-4543
www.TheHeights

**COUNTRY CARE MANOR
REHABILITATION & LONG TERM CARE**

2736 fm 775
Lavernia, Texas 78121
Phone: 830-779-2355
Fax: 830-779-5503
www.CountryCare.com



SERVING COMAL,
HAYS, GUADALUPE
AND WILSON
COUNTIES

Mission Statement

The RSVP of South Central Texas has a dual purpose of engaging persons 55 and older in volunteer service to meet critical community needs and to provide a high quality experience that will enrich the lives of the volunteers.

Seguin Office

RSVP
1000 W. Court St.
Texas Lutheran University
Seguin, TX 78155

830-379-0300
bweyland.rsvp@tlu.edu



**LEAD.
INSPIRE.
CHANGE THE
WORLD
AGAIN.**

**Make a difference in
your community today.**

**South Central Texas
RSVP**

www.rsvptlu.org

Spring & Easter Foods

O J A K K A X S A L A D K E H M Y D V T
 W E L O R E S S A C T N H N U E T K R O
 R A D I S H B Q Z O J C O F K P I A C S
 Q A S N Y J B X T M I C A R R O T I R N
 Z S C S Z U O T A U A G N W V D Q J N T
 O W W B C K U H Q B A S P A R A G U S Y
 W N Z Y B I S C U I T T T S Q F L Z O P
 U A Q D C B P C A R A M E L I Z E D E R
 Q N E S Q O B R O C C O L I J C C L F A
 U J O T T L M Y B J T S W R D G A W E U
 F R X L D F G P Y A O S L X E K D G O G
 P C U W Q E J R T O Y L A U V F G T G R
 Q C E A S R C O E X K L M L I C P Y T A
 K S P U A D P I O E B O B I L K N S Y T
 R C M L N D P Y T S N R N Y E V R M D I
 K E V R B O D C A K E B U D D T H W J N
 V R C H O C O L A T E Y E N T A N A N V
 N B S T S O U F F L E V I A O M Z L N L
 B P B C A R R O T C A K E C N H B S A R
 B D S U A R T I C H O K E N I S K E C P

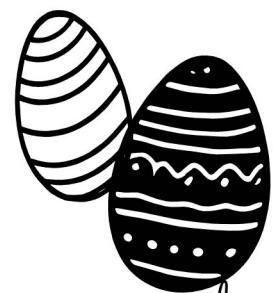
WORD LIST

ARTICHOKE
 ASPARAGUS
 AU GRATIN
 BACON
 BISCUIT
 BROCCOLI
 CAKE
 CANDY

CARAMELIZED
 CARROT
 CARROTCAKE
 CASSEROLE
 CHOCOLATE
 DEVILED
 EGG
 GREEN BEANS

HAM
 ICED TEA
 KALE
 LAMB
 POTATOES
 POTLUCK
 PROSCIUTTO

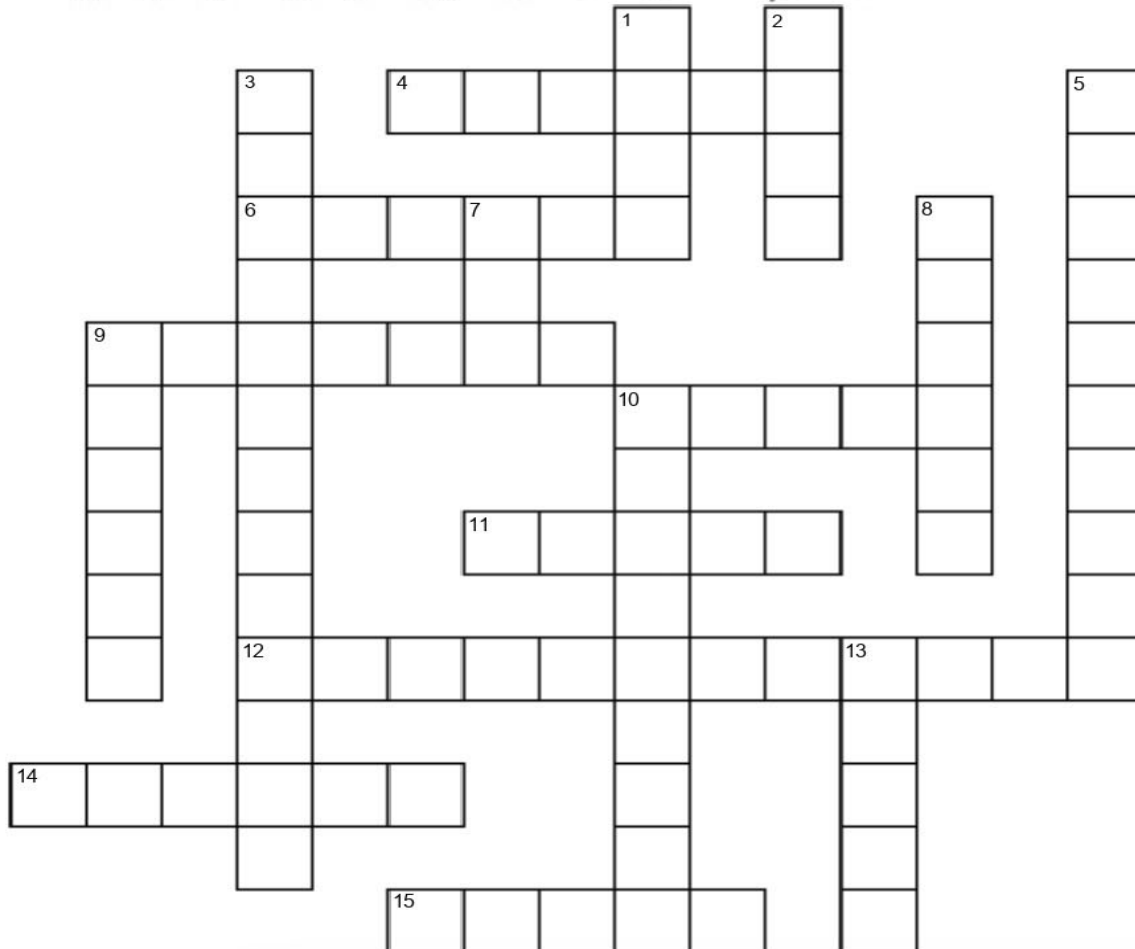
QUICHE
 RADISH
 ROLLS
 SALAD
 SLAW
 SOUFFLE
 TART



Homemade
 GIFTS MADE EASY

EASTER

crossword puzzle



Down:

- 1. Popular Easter flower.
- 2. Oval shaped items you search for on Easter.
- 3. Event where you look for plastic eggs.
- 5. Colorful candies which are popular on Easter.
- 7. Used to color Easter eggs.
- 8. Woven container that holds candy & small gifts.
- 9. Festive procession in the streets on Easter.
- 10. Easter eggs are often made of this confection.
- 13. Jumping animal the represents Easter.

Across:

- 4. The season when Easter occurs.
- 6. Day of the week when Easter occurs.
- 9. Twisted bread topped with salt with religious symbolism.
- 10. Chirping animal that hatches from eggs.
- 11. Religious symbol seen during Easter.
- 12. Easter buns with crosses on top of them.
- 14. Hat worn on Easter Sunday.
- 15. Riddles that lead to an Easter basket.

Calling all people who would like to help us as Volunteers!

We truly need someone to help us set up the announcement letters on the street sign out front, assist us in setting up the rooms for scheduled events, tidy up rooms after events, if you're certified we could use your help in the kitchen or bar area, and on occasion we need help with news articles, & folding the newsletter so it can get to the post office on time. Are you looking for a way to help?

(830) 303-6612

Please call
Glenda Partain
Tuesday – Friday after 2
to discuss the possibilities!

Guadalupe County Crime Stoppers



877.403.TIPS (8477)
www.gccsTIPS.org

Guadalupe County Crime Stoppers
P.O. Box 542
Seguin, Texas 78156-0542



1064 E. Ireland Seguin, Texas
830-379-6171 • 800-288-3921

Our Services Include:

Nursing • Physical Therapy • Home Health Aides
Speech Therapy Occupational Therapy

*Serving Guadalupe, Comal, Caldwell,
Hays, Gonzales, Wilson
and surrounding counties since 1995.*



Voted Best Home Healthcare
by Readers Choice 2018



- Large Apartments/3 floor plans to choose from
- Selective menu at all meals
- Daily Activities
- Loving Competent Care
- Family Owned and Operated

www.SeguinAssistedLiving.com

226 Preston Dr., Seguin, Texas 78155

Call Karen Taylor or Lindsey Taylor to schedule your tour today!

(830) 379-8882

License #050604



"Look to Seguin Assisted Living for a Carefree Future"

**Where there is LOVE,
there is LIFE!**

 **CIMA**

CIMA HOSPICE

830.643.1971

www.cimahospice.com/central-texas



MAR 2025

MAY 2025

S M T W T F S S M T W T F S
 23 24 25 26 27 28 1 27 28 29 30 1 2 3
 2 3 4 5 6 7 8 4 5 6 7 8 9 10
 9 10 11 12 13 14 15 11 12 13 14 15 16 17
 16 17 18 19 20 21 22 18 19 20 21 22 23 24
 23 24 25 26 27 28 29 25 26 27 28 29 30 31
 30 31 1 2 3 4 5

| Sun 30 | Mon 31 | Tue 1 | Wed 2 | Thu 3 | Fri 4 | Sat 5 |
|--------|--|------------------------|---|---|---|---|
| | CLOSED ON MONDAYS | 9:00 AM BRIDGE 4 | 9:00 AM BRIDGE 8 1:00 PM Majjhongg | 11:30 AM Lions Club 12:00 PM ZONTA BOARD LUNCH | 1:00 PM Majjhongg 2:30 PM Line Dancing | Outside Catering Event |
| 6 | 7 CLOSED ON MONDAYS | 8 9:00 AM BRIDGE 8 | 9 12:00 PM Zontas Luncheon 1:00 PM Majjhongg | 10 11:30 AM Lions Club | 11 7:00 AM GVEC MEETING 1:00 PM Majjhongg 2:30 PM Line Dancing | 12 8:00 AM CHURCH SERVICE & LUNCH 9:00 AM CELEBRATION OF LIFE |
| 13 | 14 CLOSED ON MONDAYS 6:00 PM Gideons meeting | 15 9:00 AM BRIDGE 4 | 16 9:00 AM BRIDGE 8 1:00 PM Majjhongg | 17 11:30 AM Lions Club | 18 GOOD FRIDAY 1:00 PM Majjhongg 2:30 PM Line Dancing | 19 |
| 20 | 21 CLOSED ON MONDAYS | 22 9:00 AM BRIDGE 8 | 23 12:00 PM Zontas Luncheon 12:00 PM TRES HEWELL LUNCH & LEARN 1:00 PM Majjhongg | 24 9:00 AM Friedens Bunko 11:00 AM GRMC VOLUNTEER LUNCH 11:30 AM Republican Women's Lunch 11:30 AM Lions Club | 25 9:00 AM Quilters in Yellow Rose 1:00 PM Majjhongg 2:30 PM Line Dancing 7:30 PM GABE GALVAN DANCE | 26 |
| 27 | 28 CLOSED ON MONDAYS | 29 9:00 AM BRIDGE 4 | 30 1:00 PM Majjhongg | 1 11:30 AM Lions Club | 2 1:00 PM Majjhongg 2:30 PM Line Dancing | 3 7:00 AM ELECTIONS YELLOW ROSE |

EASTER

crossword puzzle



Down:

1. Popular Easter flower.
2. Oval shaped items you search for on Easter.
3. Event where you look for plastic eggs.
5. Colorful candies which are popular on Easter.
7. Used to color Easter eggs.
8. Woven container that holds candy & small gifts.
9. Festive procession in the streets on Easter.
10. Easter eggs are often made of this confection.
13. Jumping animal the represents Easter.

Across:

4. The season when Easter occurs.
6. Day of the week when Easter occurs.
9. Twisted bread topped with salt with religious symbolism.
10. Chirping animal that hatches from eggs.
11. Religious symbol seen during Easter.
12. Easter buns with crosses on top of them.
14. Hat worn on Easter Sunday.
15. Riddles that lead to an Easter basket.

Spring & Easter Foods

O J A K K A X **S A L A D** K E H M Y D V T
 W **E L O R E S S A C** T N H N U E **T** K R O
R A D I S H B Q Z O J C O F K P I A C S
 Q A S N Y J B X T M I **C A R R O T** I R N
 Z S C S Z U O T A U A G N W V D Q J N T
 O W W B C K U **H Q B A S P A R A G U S** Y
 W N Z Y **B I S C U I T** T T S Q F L Z O P
 U **A** Q D C B P **C A R A M E L I Z E D** E R
 Q N E S Q O **B R O C C O L I** J C C L F A
 U J O T T L M Y B J T S W R D G A W E U
 F R X L D F **G P Y A O S L X E** K D G O G
P C U W Q E J R T O Y L A U V F G T G R
 Q C E A S R C O E X K L M L I C P Y T A
K S P U A D P I O E B O B I L K N S Y T
 R C M L N D P Y T S N R N Y E V R M D I
 K E V R B O D **C A K E** B U D D T H W J N
 V R **C H O C O L A T E** Y E N T A N A N V
 N B S T **S O U F F L E** V I A O M Z L N L
 B P B **C A R R O T C A K E** C N H B S A R
 B D S U **A R T I C H O K E** N I S K E C P

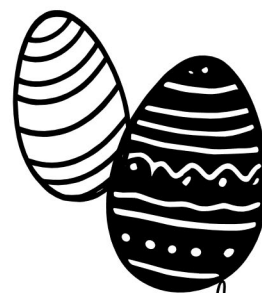
WORD LIST

ARTICHOKE
 ASPARAGUS
 AU GRATIN
 BACON
 BISCUIT
 BROCCOLI
 CAKE
 CANDY

CARAMELIZED
 CARROT
 CARROTCAKE
 CASSEROLE
 CHOCOLATE
 DEVILED
 EGG
 GREEN BEANS

HAM
 ICED TEA
 KALE
 LAMB
 POTATOES
 POTLUCK
 PROSCIUTTO

QUICHE
 RADISH
 ROLLS
 SALAD
 SLAW
 SOUFFLE
 TART



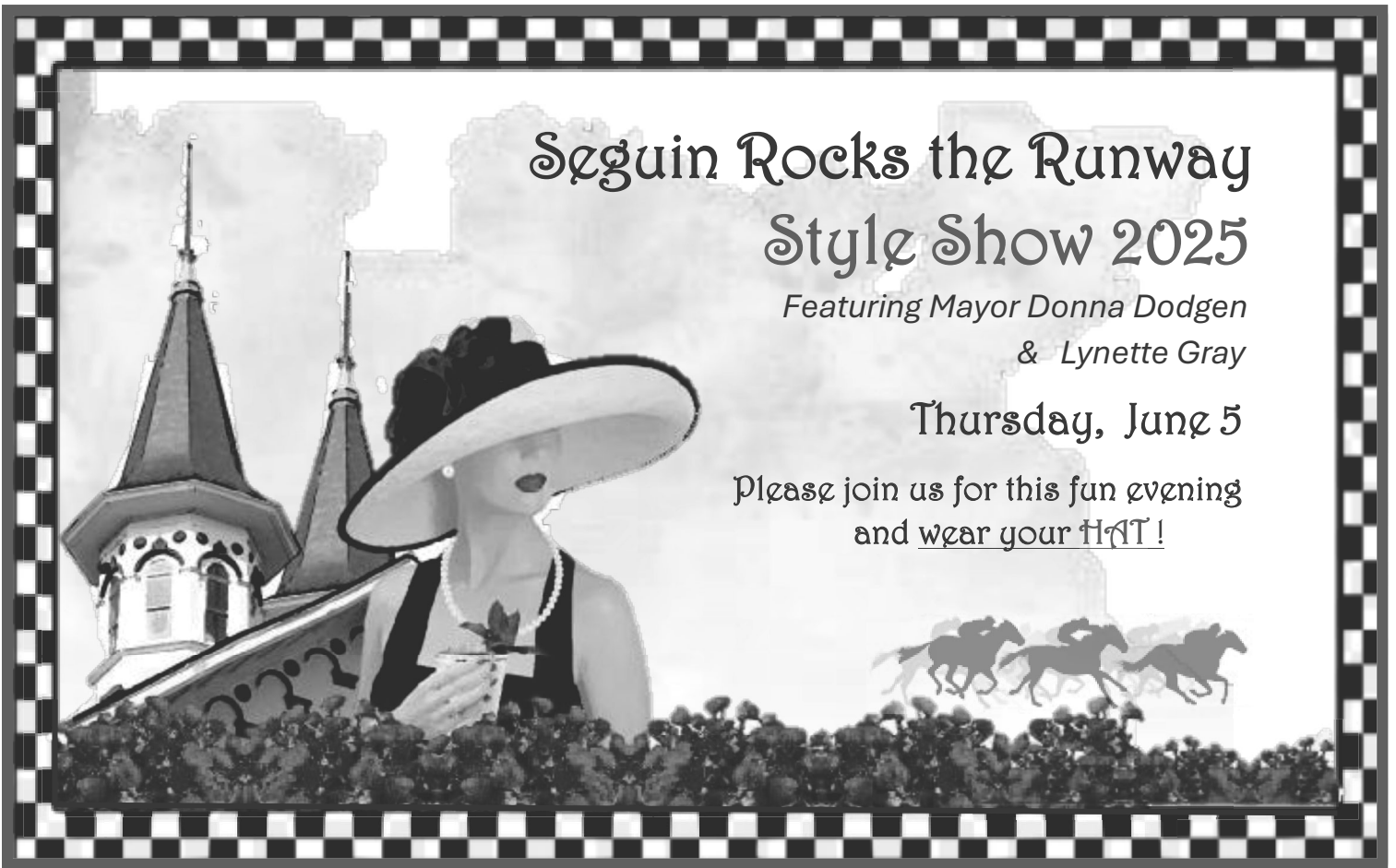
Homemade
 GIFTS MADE EASY

Seguin Rocks the Runway Style Show 2025

Featuring Mayor Donna Dodgen
& Lynette Gray

Thursday, June 5

Please join us for this fun evening
and wear your HAT!



The Crystal Chandelier Ballroom



Doors open 6:00 pm – show starts 7:00 pm

Tickets \$35

*heavy hors d'oeuvres - one complimentary beverage -
cash bar available – prize drawings*

Event Platinum Sponsor: \$2500

Gold Star - \$1000

Silver Star - \$500

Bronze Star - \$300

Sponsors Receive Reserved Tables for 8 and Special Recognition

Tickets available at The Silver Center

Please contact Glenda Partain at 830-303-6612

silvercenter@sbcglobal.net



GIFTED HEARTS

Hospice & Palliative Care

OUR SERVICES:

- Routine Home Care
- Respite Care
- Continuous Crisis Care
- General Inpatient Care
- Palliative Care
- Physical Therapy
- Psychosocial Therapy
- Bereavement Counseling
- Social Services

HOSPICE CARE

Hospice care focuses on those with life limiting illnesses. Hospice is a philosophy of caring that promotes quality of life by enhancing comfort for you and your loved ones—physically, emotionally, spiritually—with dignity as a fundamental goal of care.

GIFTED HEARTS

Hospice & Palliative Care
YOUR STRONG SUPPORT

PALLIATIVE CARE

Palliative care focuses on those with serious illnesses which may or may not be terminal. Palliative care provides comfort and symptom relief during the difficult seasons of infirmity.

CONTACT

 **(830)715.9299**

www.giftedheartshospice.com



JEMIMA CARING

Personal Care Home

WHO WE ARE

We offer a full spectrum of services designed to ensure the highest level of comfort and health for our residents. Our approach integrates professional medical oversight with personalized support, ensuring every individual's needs are met with compassion and expertise.

CONTACT

 **(830) 369-1782**

www.jemimacaring.com

OUR SERVICES:

- 24-Hour Support
- Personal Grooming
- Medical Oversight
- Memory Care
- Physical Therapy

ACTIVITIES:

- Physical Fitness
- Cognitive Stimulation
- Creative Workshops
- Outdoor Activities
- Personal Care
- Culinary Delights

**Seguin-Guadalupe County Senior Citizens Center
The Silver Center (a 501©3 Charity)**

Membership Application

Business (or Your Name) _____

Primary Contact _____

Address _____

Phone _____ **Fax** _____

Email _____

Website Address _____

Annual Membership Levels

Standard PERSONAL Membership \$ 40.00
(S20 off a room rental)

Standard Business Membership \$ 125
(listed in our business membership in the newsletter)

Gold Business Membership \$ 250
(listed in our business membership & 1 month free ad in newsletter)

Platinum Business Membership \$ 500
(listed in our membership & 2 months free ad in newsletter & 10% discount on a rental)

Diamond Business Membership \$1,000
(listed in our membership & 1 year free ad in newsletter & 10% discount on a rental)

Please invoice to the above address

Make your check payable to "The Silver Center"

Are you interested in:

- Volunteer opportunities in exchange for business recognition.**
- Providing a "Lunch and Learn" event for the community.**
- Advertising in the center's monthly newsletter.**
- Participation on the Board of Directors level for The Silver Center.**

ADVANCED Hearing aid center

Comprehensive Hearing Evaluations
Digital Technology•Repair & Service of Most Brands
Hearing Aid Batteries•Swim Plugs•Earnolds
Assistive Listening Devices

30-Day Trial Period

Financing Available

Medicaid & Most Major

Insurances Accepted

122 S.Moss ~Seguin, Texas 78155

“Across from Guadalupe Regional Medical Center”



Amy Trost,
BC-HIS, ACA
Owner
Independent
Hearing Instrument
Specialist

“to help you hear
better we listen with
our heart...”

830-372-2237

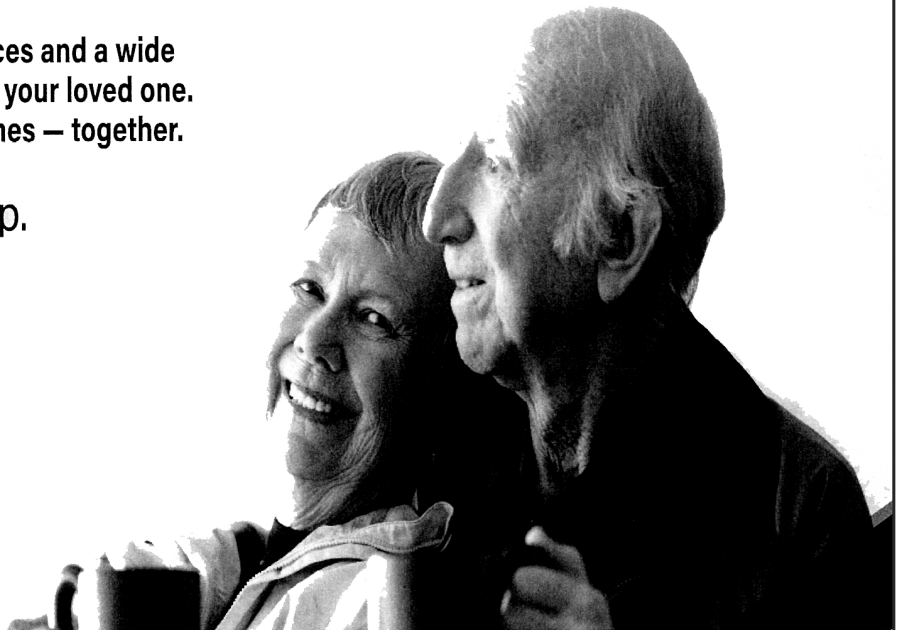
830-372-2380(fax)

EASTER WORD SCRAMBLE ANSWERS

BUTTERFLIES
CHURCH
PAINTING EGGS
DAFFODILS
CRUCIFIXION
CHOCOLATE EGG
EASTER BASKET
SACRIFICE
TULIPS
SPRING

Our staff offers unique funeral services and a wide variety of memorial options for you or your loved one. Call today to start planning your wishes – together.

We're here to help.



Goetz

830-379-2313
713 N. Austin St.
Seguin, TX 78155
goetzfuneral.com

GUADALUPE VALLEY
MEMORIAL PARK

830-609-4906
2951 S. State Hwy 46
New Braunfels, TX 78130
guadalupevalleymemorialpark.com

MEMORIALS

*** Note that any memorials received after we go to press will be in the next month's newsletter.

You will all be missed...

In memory of William Haese

Glenda & Norman Partain
Stephen & Shirley Germann
GayLynn Olsovsky
Rosie Van Booven
Pam & Kris
Pat Weber



Memorial in Honor of:

Send Acknowledement to

Name: _____

Address: _____

City: _____

State/Zip: _____

Memorial From: _____

Name: _____

Address: _____

City: _____

State/Zip: _____

Thank you for the remembrance

The Silver Center

510 E. Court • Seguin, Texas 78155

T H M

Tres Hewell Mortuary, Inc.

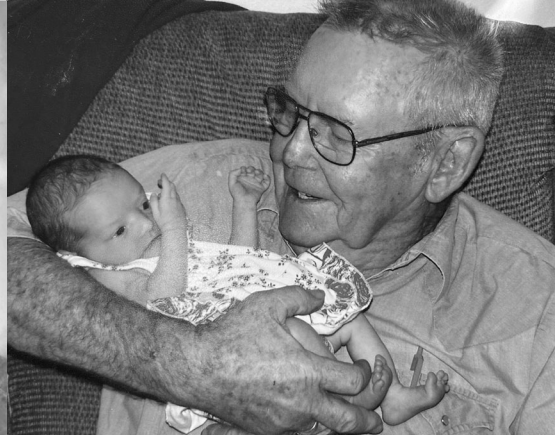
Family Owned and Operated

Tres Hewell, President

P.O. Box 820
165 Tor Drive
Seguin, Texas 78156

Phone (830) 549-5912
Fax (830) 549-5918
Cell (830) 660-5809

www.treshewell.com



Guadalupe Regional Medical Center Earns Prestigious Awards for Patient Experience, Obstetrics, and Orthopedics

Excellence in Patient Experience



Guadalupe Regional Medical Center (GRMC) has achieved notable recognition, being named one of America's 100 Best Hospitals for Patient Experience by the Women's Choice Award. The Women's Choice Award acknowledges hospitals that excel in patient satisfaction and care quality. GRMC's ranking among the top 100 hospitals is a testament to its dedication to creating positive experiences for patients, a critical factor that influences treatment outcomes and overall well-being.

Leading in Obstetrics Care



GRMC has also been distinguished as one of America's Best Hospitals for Obstetrics by the Women's Choice Award, placing it in the top 13% of U.S. hospitals for maternity care. This recognition underscores GRMC's commitment to providing safe, high-quality care for expectant mothers and their babies. The award criteria include national accreditations, patient satisfaction scores, and clinical excellence in obstetrics services.

Outstanding Orthopedic Services



In addition to its accolades in patient experience and obstetrics, GRMC has been recognized as one of America's Best Hospitals for Orthopedics, placing it in the top 6% nationwide. This honor reflects GRMC's exceptional orthopedic care, emphasizing patient safety, low complication rates, and comprehensive services, including joint replacement and spine surgery.

Commitment to Quality and Safety

The Women's Choice Award evaluates hospitals based on Hospital Consumer Assessment of Healthcare Providers and Systems (HCAHPS) survey results and primary research on women's healthcare preferences. This comprehensive assessment ensures that the recognized hospitals meet the highest standards for patient care and satisfaction. With these distinguished awards, Guadalupe Regional Medical Center continues to set a high standard in healthcare, affirming its role as a leader in patient-centered care and clinical excellence.

SEGUIN-GUADALUPE COUNTY
SENIOR CITIZENS' CENTER
510 E. COURT STREET
SEGUIN, TEXAS 78155

U.S. POSTAGE PAID
NON-PROFIT
SEGUIN, TX
PERMIT NO. 23

April 2025



Innovation you can count on. Close to home.



grmedcenter.com • 830.379.2411

Guadalupe Regional
MEDICAL CENTER

