

The Silver Showcase

Volume 1002 No.3

Email: silvercenter@sbcglobal.net • Website: www.silvercenterseguin.com

March 2025

Board of Directors

President

Rosie Van Booven

Vice President:

Barbara Behal

Treasurer:

Gay Lynn Olsovsky

Secretary:

Syndee Bundick

Board Members

Gary Kubenka

Norman Partain

Bingo Chair

Gay Lynn Olsovsky

SILVER CENTER STAFF

Executive Director

Glenda Partain

Book Keeper

Pat Weber

Cook

LuAnn Archibeque

Catering Supervisor

Brenda Aguilar

Catering Staff

Herlinda Henderson

Shelly Lindsey

Kelly Perkins-Orozco

Janitor

Phone: (830) 303-6612

Fax: (830) 379-3813

Letter From the President:

Happy March everybody!!

I guess when Punxsutawney Phil saw his shadow on Groundhog Day, he knew what was headed our way! At this point, I am certainly ready for the first day of Spring this month and for all the beauty and color it will bring us!!

I want to use this space to say a big “Thank You” to everyone who comes to our Friday night dances! And it’s not just for your support of our events. I appreciate the kindness and welcome that you share with others! We have seen quite a few new faces lately, and it’s wonderful that folks invite the newcomers to sit at their tables, where there is room, to enjoy the evening! And we have so many groups of family and friends that come to enjoy the evening together too!! That’s wonderful!! Time with family, good friends, good music, good times! That is what life is all about! We need to enjoy it while we can!!

As I always say, thank you all so much for supporting the Silver Center!! We hope to see you soon!!

Rosie Van Booven



HELLO FROM THE FRONT DESK....

Make a Memory has been my theme for a while... Are you out there making memories?

What is a memory to you? Webster says memory is *'the faculty by which the mind stores and remembers information'*. (Not a very romantic definition.)

In my mind it is a snapshot picture of something very important to me tucked away in my mind and ready for me to pull it out and enjoy it again. Usually something fun or beautiful. Something important, but fleeting. I thank God daily for the memories that I have... and the many more to come.

March at the Silver Center brings memorable birthday celebrations, baby showers, bridge games, bunko parties and civic meetings. It also brings a memory filled daddy-daughter dance and a Project Graduation mahjongg tournament and 2 great country music dances. **MARCH 14th** please join us for the smooth sounds of **The Merles** and on **MARCH 28th** the fabulous country music of **Gabe Galvan**. You asked for these dances, and I am so glad that you are enjoying them! Tickets are on sale now. Please come see Pat to purchase your \$10 presale tickets or get them for \$15 at the door.

Thank you for being a part of the Silver Center family. Please remember that we are here for you...



Glenda Partain

BUSINESS MEMBERS

The Silver Center is sincerely grateful for the support of our faithful Business Members.

DIAMOND MEMBERS

*Seguin Noon Lions
Gifted Heart Hospice*

PLATINUM MEMBERS

Tri-County A/C
CMC Commercial Metal Company
Guadalupe Regional Medical Center

GOLD MEMBERS

First United Bank
2-G Consulting LLC
Kimberly A Illhardt CPA LLC
Advanced Home Health Services
Excelin Health, LLC * Concentration

STANDARD MEMBERS

GVEC
Partners LLC
Sunrise Lions Club
Tres Hewell Mortuary
NOVA Access Flooring
Heart to Heart Hospice
Gary Kubenka Painting
Seguin Gazette-Enterprise
Emanuel's Lutheran Church
Guadalupe Humane Society
Westerhom-Koehler Insurance
Nesbit Living & Recovery Center
Guadalupe County Republican Women
Guadalupe County Conservative Republicans
Seguin-Guadalupe County Heritage Museum
Charles White DPM, FACFAS, - TX Foot & Ankle Surgical Assoc.



March Word Scramble

UBSDGYAL _____

TELFRISEVTU _____

FOLIDAF _____

LOSBMSOS _____

PITLUS _____

NISUHESN _____

GIPCRHNI _____

OELSRWF _____

ZEREBE _____

WONABIR _____

Please call Glenda Partain at (830) 303-6612 today to
volunteer a couple of hours of your time
around the Center.

VOLUNTEER - HOURS - FEBRUARY
410 Hrs

THANK YOU to all of our VOLUNTEERS that helped us
serve our community and those who are helping us deliver
meals!

May God Bless all of our Board of Directors who volunteer
so much of their time to assist us with special events, dances,
and more!

CHARITABLE DONATIONS FOR MARCH
Barbara Behal
Line Dancers
Clara Mae Marcotte

Smile Awhile

By Velma Buie

A man is recovering from surgery when a nurse asks him how he is feeling. "I'm ok but I did not like the four letter word the doctor used in surgery", he answered. "What did he say?" asked the nurse. "OOPS!!"

How many men does it take to open a beer? None...it should be open when she brings it! :0)

My body is a temple----ancient and crumbling. Ha Ha

I came. I saw. I forgot what I was doing. Retraced my steps. Got lost on the way back. Now I have no idea what's going on.....

Men, never laugh at your spouse's choices.....YOU are one of them.

Retired signage: Under New Management – See Spouse for Details.

Just Once, I want a username and password prompt to say: Close Enough!!

If a cow doesn't produce milk. Is it a *Milk Dud* or an *Udder Failure*?!?

You don't realize how old you are until you sit on the floor and then try to get back up!

We all get heavier as we get older, because there's a lot more information in our heads. That's my story and I am sticking to it!!

I'm a multitasker. I can listen, ignore, and forget all at the same time.

Losing weight does not seem to be working for me, so from now on I am going to concentrate on getting taller.

I thought the dryer made my clothes shrink.....turns out it is the refrigerator!

A blonde calls Delta Airlines and asks, "Can you tell me how long it takes to fly from San Francisco to New York City?" The agent replies, "just a minute..." The blonde says "Thank you" and hangs up.

Marriage Counselor: Your wife says you never buy her flowers, Is that true? No, to be honest I did not know she sold flowers!

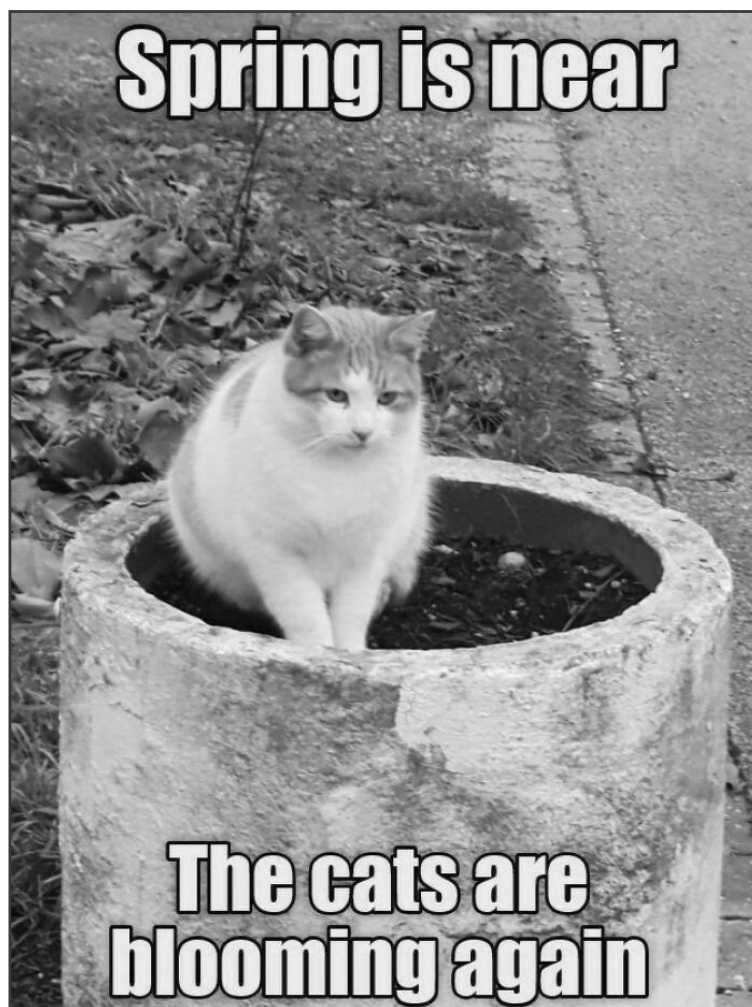
When you can't find the sunshine.....be the SUNSHINE!!


*Birthdays
of the
Month*

If you have a November birthday, and are not on our list, please call us so we can update our records! Please note we currently make **to-go** lunches, with **preorder** on Tuesday or Thursday!

MARCH BIRTHDAYS

Clarice Ullrich	3/3
Shirla Humiston	3/7
Jim Rhodes	3/7
Willie Bloch	3/8
Betsy Martin	3/10
Liz Romero	3/10
Barbara Behal	3/11
William Haese	3/11
Sherri Nixon	3/12
Linda C Dietz	3/20
Kay Willmann	3/24
Liz Hilsdorf	3/25
Linda Schuler	3/26
Robert Kellner	3/31



We ♥ Our



LuAnn Archibeque

Barbara Behal

Syndee Bundick

Velma Buie

“Buster” Cage

Mary Jane Cage

Jamie Evans

Brenda Englemann

Dena Flanagan

Tom Franczak

Martha Greenlaw

Shirla Humiston

Bob Kellner

Gary Kubenka

Pierce Law

Glenda Partain

Sharee Layton

Karen McMath

Betsy Martin

Evelyn Martin

Gay Lynn Olsovsky

Norman Partain

Kelly Perkins-Orozco

Santa Smith

Kay Stuart

Rosie Van Booven

Pat Weber

Liz Witten

Catering by The Silver Center



PODIATRIST SEEING PATIENTS in *Seguin*



Charles White
DPM, FACEAS

Specializing in Care of the Foot & Ankle

- Diabetic Foot Care
- Foot and Ankle Pain
- Primary Podiatry
- Nail/Skin Care
- Wound Care
- Dual Board Certified
- Sports Medicine

Call now for an appointment!
830-491-9211



TEXAS FOOT & ANKLE
SURGICAL ASSOCIATES, PLLC

- Prompt appointments available
- Also seeing patients in Koenig, LaVaca and Nimitz
- Most insurances accepted

932 South State Hwy. 123 Bypass • Seguin, TX 78155
www.southtxpodiatry.com



THE SILVER CENTER / CRYSTAL CHANDALIER BALLROOM

Friday's music starts @ 7:30PM. Doors open at 6:30PM. Call 830-393-6612 for \$10 pre-sale tickets. Tickets \$15 @ the door.

MARCH	14	THE MERLES
	28	<u>GABE GALVAN & FRIENDS</u>
APRIL	11	<i>No Dance Due To Holiday</i>
	25	<u>GABE GALVAN & FRIENDS</u>
MAY	16	PAUL SANCHEZ & WRANGLER COUNTRY
	30	<u>GABE GALVAN & FRIENDS</u>
JUNE	13	BIMBO
	27	<u>GABE GALVAN & FRIENDS</u>
JULY	11	PENDING
	25	<u>GABE GALVAN & FRIENDS</u>
AUGUST	08	PAUL SANCHEZ & WRANGLER COUNTRY
	22	<u>GABE GALVAN & FRIENDS</u>
SEPTEMBER	12	BIMBO
	26	<u>GABE GALVAN & FRIENDS</u>
OCTOBER	10	THE MERLES
	24	<u>GABE GALVAN & FRIENDS</u>
NOVEMBER	14	PAUL SANCHEZ & WRANGLER COUNTRY
	28	<i>No Dance Due To Holiday</i>
DECEMBER	12	<i>Byron Zipp</i>
	26	<i>No Dance Due To Holiday</i>



*Our care makes the difference.
Our heart makes it home*

- * Skilled Nursing Care
- * Physical, Occupational & Speech Therapies
- * Rehabilitation available up to 6 days a week
- * Stroke Rehabilitation
- * Complex wound care
- * Tracheostomy care
- * E-stim, Vital-stim & Ultrasound
- * Wii-abilitation
- * Delicious meals

**THE HEIGHTS
OF GONZALES**

701 North Sarah DeWitt
Gonzales, Texas 78629
Phone: 830-672-4530
Fax: 830-672-4543
www.TheHeights

**COUNTRY CARE MANOR
REHABILITATION & LONG TERM CARE**

2736 fm 775
Lavernia, Texas 78121
Phone: 830-779-2355
Fax: 830-779-5503
www.CountryCare.com



SERVING COMAL,
HAYS, GUADALUPE
AND WILSON
COUNTIES

Mission Statement

The RSVP of South Central Texas has a dual purpose of engaging persons 55 and older in volunteer service to meet critical community needs and to provide a high quality experience that will enrich the lives of the volunteers.

Seguin Office

RSVP
1000 W. Court St.
Texas Lutheran University
Seguin, TX 78155

830-379-0300
bweyland.rsvp@tlu.edu



**LEAD.
INSPIRE.
CHANGE THE
WORLD
AGAIN.**

**Make a difference in
your community today.**

**South Central Texas
RSVP**

www.rsvptlu.org



MARCH



Word Search

Find the words listed. Words may appear forward, backward, up, down or diagonal. Words may overlap and cross each other. When you have found a word, be sure to circle it and cross it off the list.

R N O I L K C I R T A P T S R C
 K W N S G N I V A S X S L E M R
 Y B U T T E R F L Y E A W R F O
 Q D T K G N R X T N M O T H G C
 N J N G R E E N E B L H N N D U
 N O N I N X R L K F N G I A X S
 B Y S E W R X P S L P R F H T L
 M F W A M T E V A D P F K C R X
 X A T O E D R T B S O K C R E O
 L I O H T S J A S D M I O A B N
 H L R Y K K W N I A K T R M I I
 B L C I K P H L X N E E M Y R U
 D J K H S C T H G I L Y A D T Q
 V Z D F I H U C M Q P Z H V H E
 P D G W M C H L E N I H S N U S
 X T U L I P K B H A T C H I N G

- BASKET
- BLOOM
- BUTTERFLY
- CHICK
- CROCUS
- DAFFODIL
- DAYLIGHT
- EASTER
- EQUINOX
- FLOWER
- GREEN
- HATCHING
- IRISH
- KITE
- LAMB
- LION
- LUCKY
- MARCH
- NEST
- RAIN
- REBIRTH
- RENEWAL

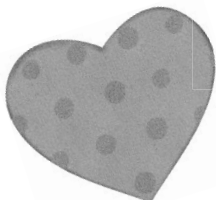


ST. PATRICK

SUNSHINE

TULIP

WINDY

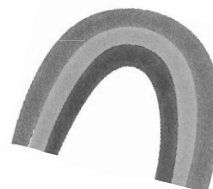
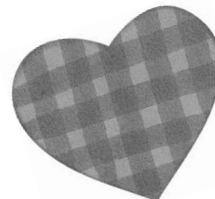


SAVINGS

SEASON

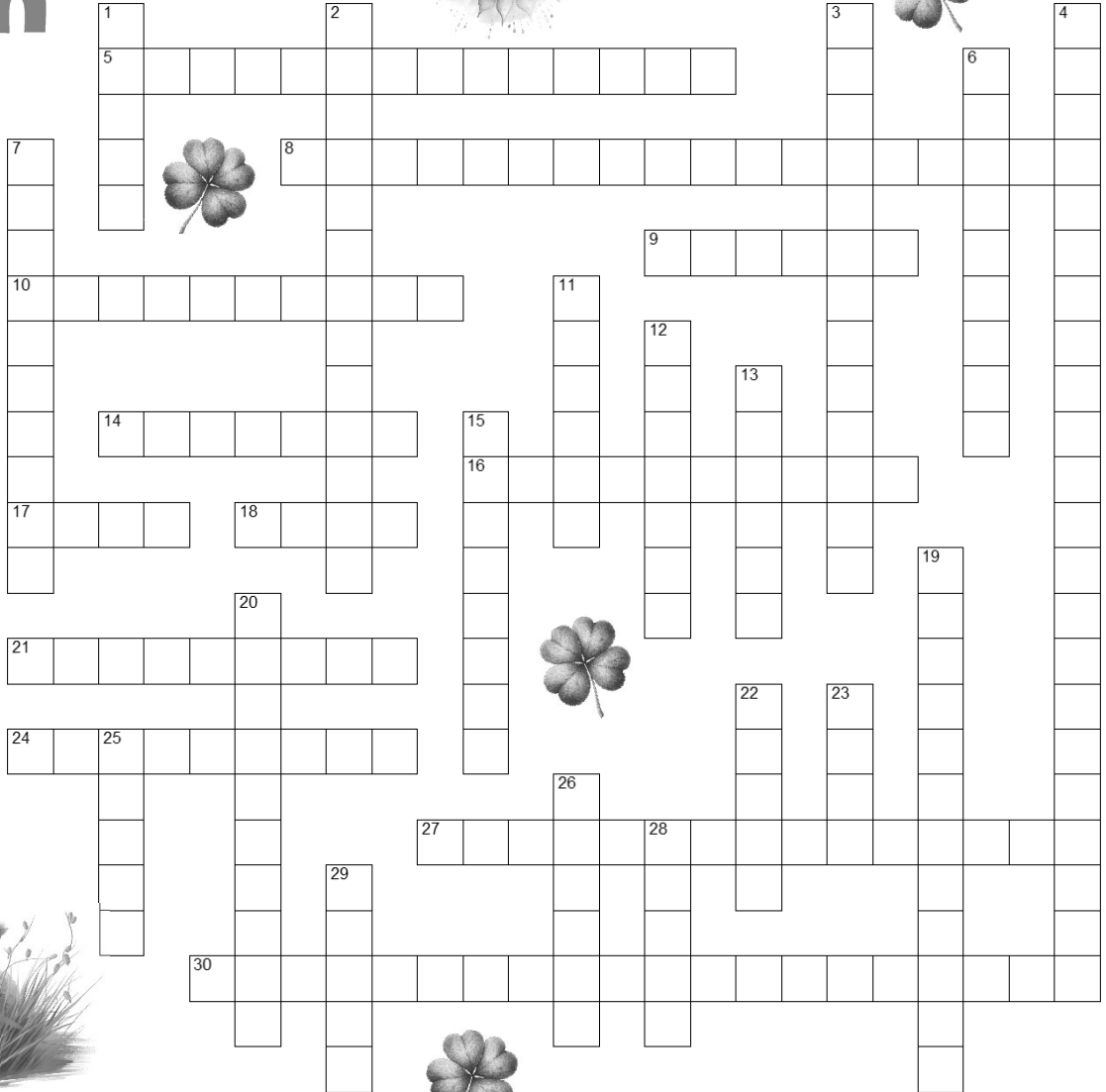
SHAMROCK

SPRING



March

Crossword



Across

- 5. Famous scientist born on March 14th, known for his theory of relativity
- 8. Time when clocks are moved forward an hour, occurring in March
- 9. Traditional color of Mardi Gras celebrations, which sometimes occur in March
- 10. Common March activity involving kites
- 14. Famous children's author born on March 2nd, known for "Green Eggs and Ham"
- 16. Birthstone associated with March
- 17. Common phrase related to March weather: "In like a ___ out like a lamb."
- 18. Common activity during March: filling out ___ brackets
- 21. Common March tradition: wearing ___ for good luck
- 24. Common March activity involving planting seeds
- 27. U.S. territory that celebrates its Transfer Day on March 31st
- 30. Holiday celebrated on March 2nd in Texas

Down

- 1. This month has the first day of spring
- 2. Famous Irish holiday celebrated on March 17th
- 3. Celestial event that marks the beginning of spring, occurring around March 20th
- 4. Day set aside for women's rights, observed on March 8th
- 6. Number of days in March
- 7. Popular sport often played in March
- 11. Holiday celebrated on March 21st, known as the Persian New Year
- 12. U.S. state that celebrates its statehood on March 4th
- 13. Term for the warmth that begins to return in March
- 15. Flower commonly associated with March
- 19. NCAA college basketball tournament held in March
- 20. Traditional meat served on St. Patrick's Day
- 22. Animal often associated with Easter, which sometimes falls in March
- 23. Ancient Roman festival celebrated at the end of March, honoring the god of war
- 25. Bird known for its return in March, signaling spring
- 26. Zodiac sign that begins in March
- 28. Color often associated with St. Patrick's Day
- 29. Popular spring break destination for many students

Calling all people who would like to help us as Volunteers!

We truly need someone to help us set up the announcement letters on the street sign out front, assist us in setting up the rooms for scheduled events, tidy up rooms after events, if you're certified we could use your help in the kitchen or bar area, and on occasion we need help with news articles, & folding the newsletter so it can get to the post office on time. Are you looking for a way to help?

(830) 303-6612

Please call
Glenda Partain
Tuesday – Friday after 2
to discuss the possibilities!

Guadalupe County Crime Stoppers



877.403.TIPS (8477)
www.gccsTIPS.org

Guadalupe County Crime Stoppers
P.O. Box 542
Seguin, Texas 78156-0542



1064 E. Ireland Seguin, Texas
830-379-6171 • 800-288-3921

Our Services Include:

Nursing • Physical Therapy • Home Health Aides
Speech Therapy Occupational Therapy

*Serving Guadalupe, Comal, Caldwell,
Hays, Gonzales, Wilson
and surrounding counties since 1995.*



Voted Best Home Healthcare
by Readers Choice 2018



- Large Apartments/3 floor plans to choose from
- Selective menu at all meals
- Daily Activities
- Loving Competent Care
- Family Owned and Operated

www.SeguinAssistedLiving.com

226 Preston Dr., Seguin, Texas 78155

Call Karen Taylor or Lindsey Taylor to schedule your tour today!

(830) 379-8882

License #050604



"Look to Seguin Assisted Living for a Carefree Future"

**Where there is LOVE,
there is LIFE!**

 **CIMA**

CIMA HOSPICE

830.643.1971

www.cimahospice.com/central-texas

March 2025



FEB 2025

APR 2025

S M T W T F S S M T W T F S
 26 27 28 29 30 31 1 30 31 1 2 3 4 5
 2 3 4 5 6 7 8 6 7 8 9 10 11 12
 9 10 11 12 13 14 15 13 14 15 16 17 18 19
 16 17 18 19 20 21 22 20 21 22 23 24 25 26
 23 24 25 26 27 28 1 27 28 29 30 1 2 3

Sun 23	Mon 24	Tue 25	Wed 26 Today	Thu 27	Fri 28	Sat 1
	CLOSED ON MONDAYS	9:00 AM Bridge (8)	1:00 PM Majhongg	9:00 AM Friedens Bunco Party 11:30 AM Lions Club 12:00 PM Republican Women's Lunch	1:00 PM Majhongg 2:30 PM Line Dancing 7:30 PM GABE GALVAN DANCE	12:00 PM Private Birthday Party
2	3 CLOSED ON MONDAYS	4 1:00 PM Bridge (4)	5 9:00 AM Bridge (8) 1:00 PM Majhongg	6 11:30 AM Lions Club 5:00 PM LULAC DINNER	7 1:00 PM Majhongg 2:30 PM Line Dancing	8
14	10 CLOSED ON MONDAYS Celebration of Life 5:00 PM Gideons meeting	11 11:30 AM Rotary Club Luncheon 12:00 PM Bridge (8)	12 12:00 PM Zonta Luncheon 1:00 PM Majhongg	13 11:30 AM Lions Club 12:00 PM Class of 1954 lunch	14 1:00 PM Majhongg 2:30 PM Line Dancing 7:30 PM DANCE 7:30 PM THE MERLES	15 Private Party in Ballroom
16	17 CLOSED ON MONDAYS	18 9:00 AM Bridge (4)	19 11:30 AM Lunch & Learn 11:30 AM Pain Specialists Lunch 1:00 PM Majhongg	20 11:30 AM Lions Club 7:00 PM Conservative Republican meeting	21 1:00 PM Majhongg 2:30 PM Line Dancing 5:00 PM SW Prep Dance	22
23	24 CLOSED ON MONDAYS	25 9:00 AM Bridge (8) 9:30 AM Set Up Tournament	26 Project Graduation 8:30 AM Mahjongg Tournament	27 9:00 AM Friedens Bunco 11:30 AM Lions Club 12:00 PM GC Republican Women's Lunch	28 1:00 PM Majhongg 2:30 PM Line Dancing 7:30 PM GABE GALVAN DANCE	29 Private Party in Ballroom
30	31 CLOSED ON MONDAYS	1	2 1:00 PM Majhongg	3 11:30 AM Lions Club	4 1:00 PM Majhongg	5

MARCH

Solution

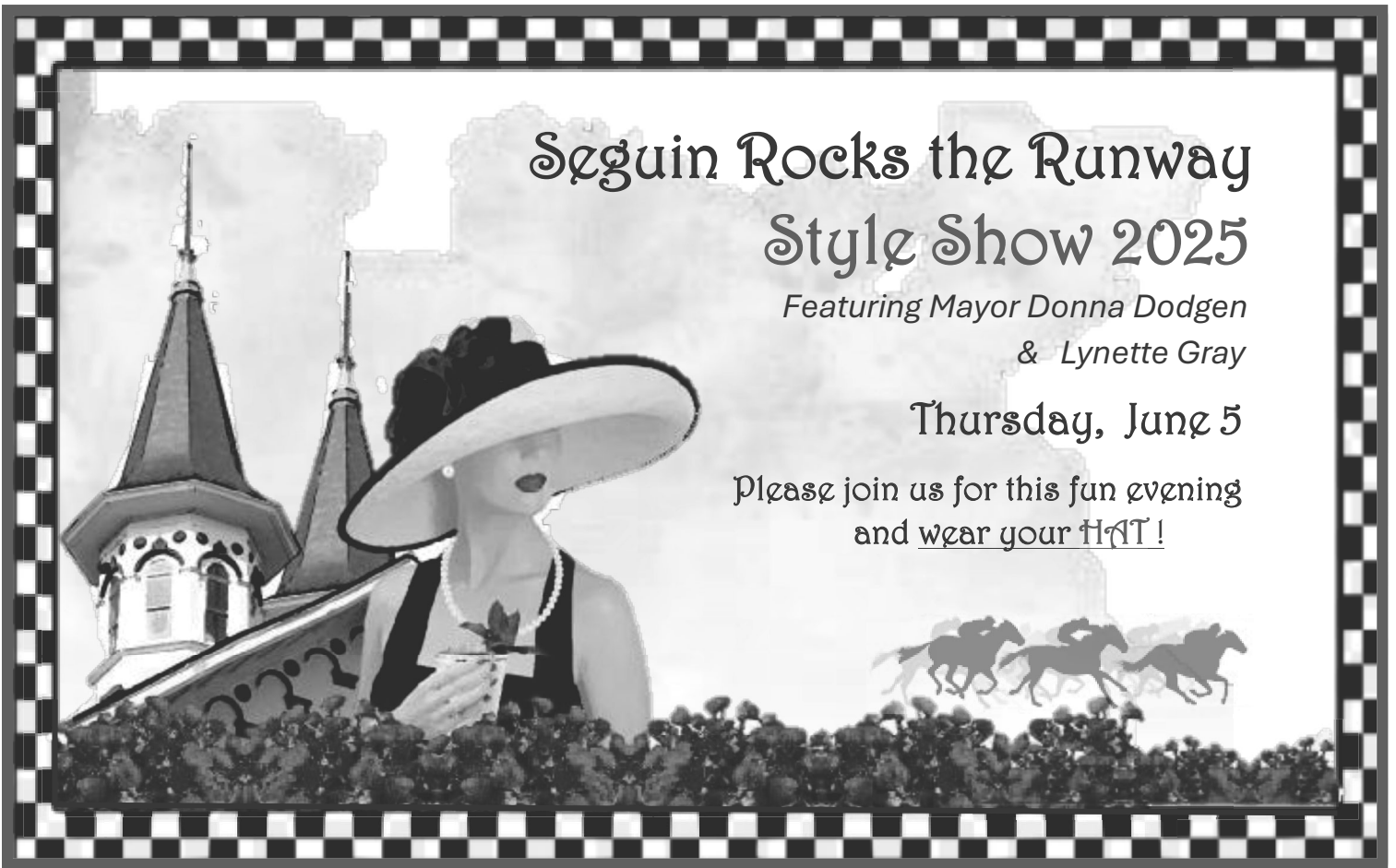
R **N O I L** **K C I R T A P T** **S** R **C**
K W N **S G N I V A S** X S **L E M** R
Y **B U T T E R F L Y** E A W R F O
Q D T K G N **R** X **T** **N M O T H G** C
N J N **G R E E N** E **B L H N N D** U
N O N I N X R L K **F N G I A X** S
B Y S E **W** R X P S L P R F H T L
M F W A **M** T E V A D P F **K C** **R** X
X A T O E D **R T B** **S O K** C R E O
L **I O H T S** J A S D M I O A B N
H L R Y K K W N I A K T R **M** I I
B L C I K P H **L X N E** E M Y R U
D J K H S C **T H G I L Y A D** T Q
V Z D F I H U C M Q P Z H V H **E**
P D G W M C H **L** **E N I H S N U S**
X **T U L I P** **K** B **H A T C H I N G**

Seguin Rocks the Runway Style Show 2025

Featuring Mayor Donna Dodgen
& Lynette Gray

Thursday, June 5

Please join us for this fun evening
and wear your HAT!



The Crystal Chandelier Ballroom



Doors open 6:00 pm – show starts 7:00 pm

Tickets \$35

*heavy hors d'oeuvres - one complimentary beverage -
cash bar available – prize drawings*

Event Platinum Sponsor: \$2500

Gold Star - \$1000

Silver Star - \$500

Bronze Star - \$300

Sponsors Receive Reserved Tables for 8 and Special Recognition

Tickets available at The Silver Center

Please contact Glenda Partain at 830-303-6612

silvercenter@sbcglobal.net



GIFTED HEARTS

Hospice & Palliative Care

OUR SERVICES:

- Routine Home Care
- Respite Care
- Continuous Crisis Care
- General Inpatient Care
- Palliative Care
- Physical Therapy
- Psychosocial Therapy
- Bereavement Counseling
- Social Services

HOSPICE CARE

Hospice care focuses on those with life limiting illnesses. Hospice is a philosophy of caring that promotes quality of life by enhancing comfort for you and your loved ones—physically, emotionally, spiritually—with dignity as a fundamental goal of care.

GIFTED HEARTS

Hospice & Palliative Care
YOUR STRONG SUPPORT

PALLIATIVE CARE

Palliative care focuses on those with serious illnesses which may or may not be terminal. Palliative care provides comfort and symptom relief during the difficult seasons of infirmity.

CONTACT

 **(830)715.9299**

www.giftedheartshospice.com



JEMIMA CARING

Personal Care Home

WHO WE ARE

We offer a full spectrum of services designed to ensure the highest level of comfort and health for our residents. Our approach integrates professional medical oversight with personalized support, ensuring every individual's needs are met with compassion and expertise.

CONTACT

 **(830) 369-1782**

www.jemimacaring.com

OUR SERVICES:

- 24-Hour Support
- Personal Grooming
- Medical Oversight
- Memory Care
- Physical Therapy

ACTIVITIES:

- Physical Fitness
- Cognitive Stimulation
- Creative Workshops
- Outdoor Activities
- Personal Care
- Culinary Delights

**Seguin-Guadalupe County Senior Citizens Center
The Silver Center (a 501©3 Charity)**

Membership Application

Business (or Your Name) _____

Primary Contact _____

Address _____

Phone _____ **Fax** _____

Email _____

Website Address _____

Annual Membership Levels

Standard PERSONAL Membership \$ 40.00
(S20 off a room rental)

Standard Business Membership \$ 125
(listed in our business membership in the newsletter)

Gold Business Membership \$ 250
(listed in our business membership & 1 month free ad in newsletter)

Platinum Business Membership \$ 500
(listed in our membership & 2 months free ad in newsletter & 10% discount on a rental)

Diamond Business Membership \$1,000
(listed in our membership & 1 year free ad in newsletter & 10% discount on a rental)

Please invoice to the above address

Make your check payable to "The Silver Center"

Are you interested in:

- Volunteer opportunities in exchange for business recognition.**
- Providing a "Lunch and Learn" event for the community.**
- Advertising in the center's monthly newsletter.**
- Participation on the Board of Directors level for The Silver Center.**

ADVANCED Hearing aid center

Comprehensive Hearing Evaluations
 Digital Technology•Repair & Service of Most Brands
 Hearing Aid Batteries•Swim Plugs•Earnolds
 Assistive Listening Devices

30-Day Trial Period

Financing Available

Medicaid & Most Major

Insurances Accepted

122 S.Moss ~Seguin, Texas 78155

“Across from Guadalupe Regional Medical Center”



Amy Trost,
 BC-HIS, ACA
 Owner
 Independent
 Hearing Instrument
 Specialist

“to help you hear
 better we listen with
 our heart...”

830-372-2237

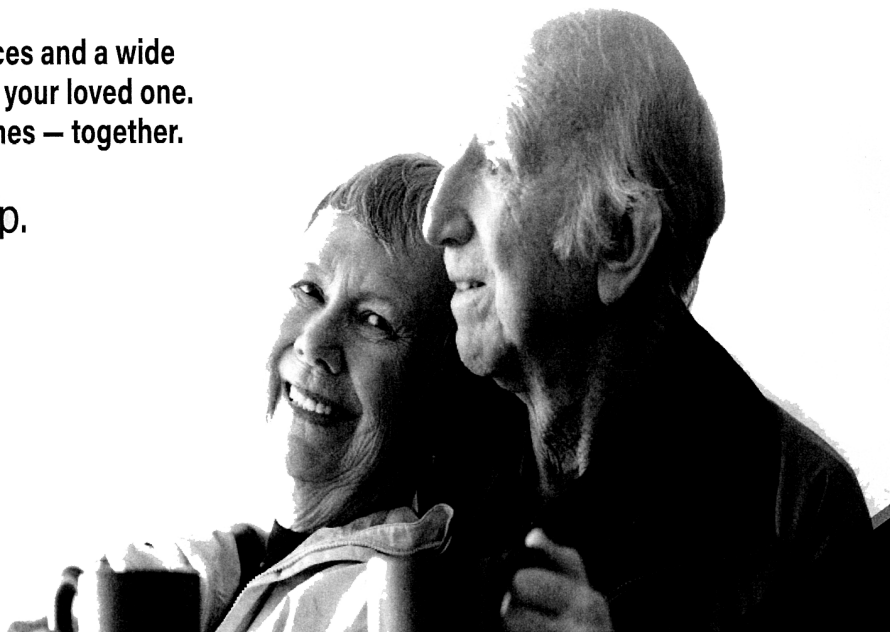
830-372-2380(fax)

MARCH WORD SCRAMBLE ANSWERS

LADYBUGS
 BUTTERFLIES
 DAFFODIL
 BLOSSOMS
 TULIPS
 SUNSHINE
 CHIRPING
 FLOWERS
 BREEZE
 RAINBOW

Our staff offers unique funeral services and a wide variety of memorial options for you or your loved one. Call today to start planning your wishes – together.

We're here to help.



Goetz

830-379-2313
 713 N. Austin St.
 Seguin, TX 78155
 goetzfuneral.com



830-609-4906
 2951 S. State Hwy 46
 New Braunfels, TX 78130
 guadalupevalleymemorialpark.com

MEMORIALS

*** Note that any memorials received after we go to press will be in the next month's newsletter.

You will all be missed...

In memory of Ford Martin

Evelyn Martin

In memory of Henry Reyes

Gay Lynn & Teddy Olsovsky



Memorial in Honor of:

Send Acknowledement to

Name: _____

Address: _____

City: _____

State/Zip: _____

Memorial From: _____

Name: _____

Address: _____

City: _____

State/Zip: _____

Thank you for the remembrance

The Silver Center

510 E. Court • Seguin, Texas 78155

TTHM

Tres Hewell Mortuary, Inc.

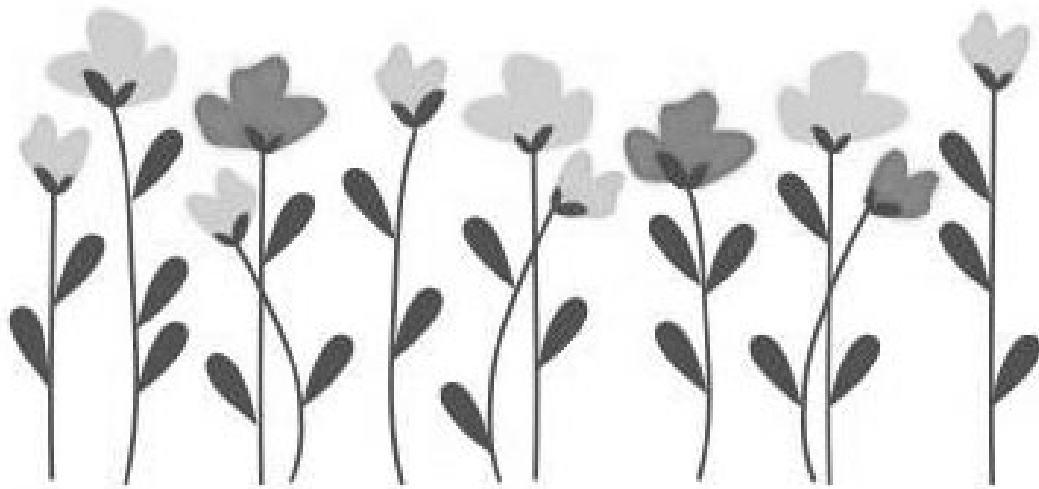
Family Owned and Operated

Tres Hewell, President

P.O. Box 820
165 Tor Drive
Seguin, Texas 78156

Phone (830) 549-5912
Fax (830) 549-5918
Cell (830) 660-5809

www.treshewell.com



Spring never waits for winter to leave

It comes and drives away the cold

You need no perfect time to start

You start, and it's the perfect time

Guadalupe Regional Medical Center Earns Prestigious Awards for Patient Experience, Obstetrics, and Orthopedics

Excellence in Patient Experience



Guadalupe Regional Medical Center (GRMC) has achieved notable recognition, being named one of America's 100 Best Hospitals for Patient Experience by the Women's Choice Award. The Women's Choice Award acknowledges hospitals that excel in patient satisfaction and care quality. GRMC's ranking among the top 100 hospitals is a testament to its dedication to creating positive experiences for patients, a critical factor that influences treatment outcomes and overall well-being.

Leading in Obstetrics Care



GRMC has also been distinguished as one of America's Best Hospitals for Obstetrics by the Women's Choice Award, placing it in the top 13% of U.S. hospitals for maternity care. This recognition underscores GRMC's commitment to providing safe, high-quality care for expectant mothers and their babies. The award criteria include national accreditations, patient satisfaction scores, and clinical excellence in obstetrics services.

Outstanding Orthopedic Services



In addition to its accolades in patient experience and obstetrics, GRMC has been recognized as one of America's Best Hospitals for Orthopedics, placing it in the top 6% nationwide. This honor reflects GRMC's exceptional orthopedic care, emphasizing patient safety, low complication rates, and comprehensive services, including joint replacement and spine surgery.

Commitment to Quality and Safety

The Women's Choice Award evaluates hospitals based on Hospital Consumer Assessment of Healthcare Providers and Systems (HCAHPS) survey results and primary research on women's healthcare preferences. This comprehensive assessment ensures that the recognized hospitals meet the highest standards for patient care and satisfaction. With these distinguished awards, Guadalupe Regional Medical Center continues to set a high standard in healthcare, affirming its role as a leader in patient-centered care and clinical excellence.

SEGUIN-GUADALUPE COUNTY
SENIOR CITIZENS' CENTER
510 E. COURT STREET
SEGUIN, TEXAS 78155

U.S. POSTAGE PAID
NON-PROFIT
SEGUIN, TX
PERMIT NO. 23

March 2025



Award-winning **surgeons**. Always **close to home**.



grmedcenter.com • 830.379.2411

Guadalupe Regional
MEDICAL CENTER

